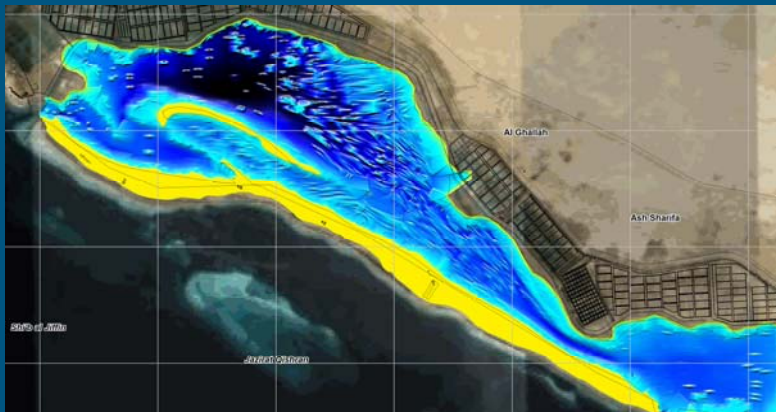


Red Sea GIS Spatial Data Base

The National Prawn Company (NPC) of Saudi Arabia identified the need to systematically assess the potential for expanding its aquaculture operations in the Red Sea. BMT WBM assisted with a key part of this assessment by compiling a searchable GIS database of all relevant grid and vector data of the Red Sea for subsequent 'on the fly' interrogation by NPC staff.

This tool comprised GIS information drawing on numerical model simulations, monitoring, survey and anecdotal data sets. The data was delivered in a coherent and searchable fashion, with supporting onsite training delivered to NPC staff in Jeddah. The resultant system was used immediately to inform further monitoring works and provide decision support for determination of possible expansion locations.



Client

National Prawn Company,
Saudi Arabia

Date

2008

Services & Expertise Provided

Identify, assess and collate GIS and other data;

In-house team including extensive engineering and environmental staff to assist with data validation;

Development of data interrogation protocols;

High quality GIS mapping and analysis; and

Provide GIS services, training and technical support.

