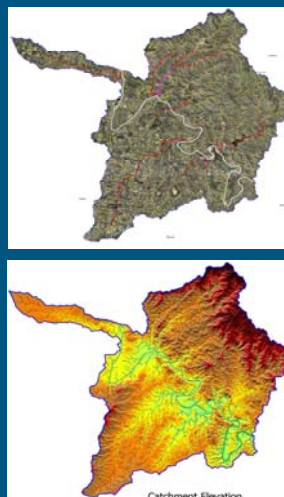
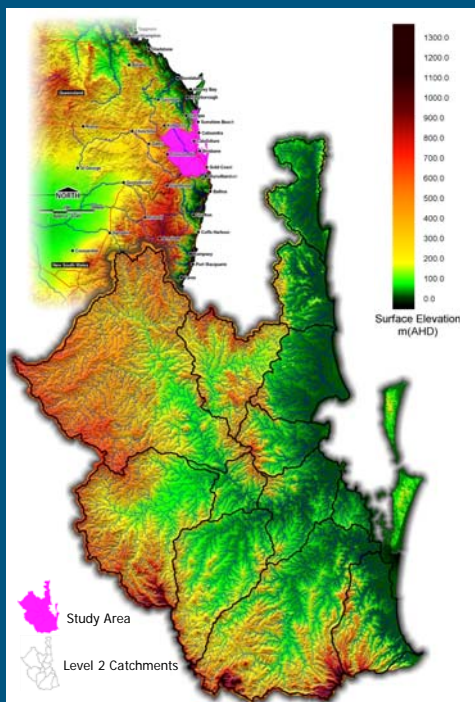


# South East Queensland Stream Order Mapping

The Moreton Bay Waterways and Catchments Partnership is interested in the maintenance and health of streams and rivers in southeast Queensland. Prior to this study, no unified data sets existed that showed the location and order of all streams in South East Queensland. As such, BMT WBM was commissioned to prepare a digital elevation model (DEM) of the entire SEQ region, then use novel GIS techniques to produce vector stream data for the area. The stream locations and orders were 'ground-truthed' by several field trips that correlated and confirmed the generated streams with actual stream locations.

The generated stream data is now employed by various stakeholder groups throughout southeast Queensland to assist in environmental management decisions, and as a general decision support tool for environmental and water use planning.

The supply of the new data created the need to also supply the data to the general public in other than the normal GIS datasets. The data was placed on the internet to allow interactive access for all. The data was also placed on self loading CD's that reflected the data on the internet and allowed access for people without cable internet.



## Client

Moreton Bay Waterways and Catchments Partnership

## Date

2003

## Services & Expertise Provided

Stream Order Mapping for SEQ;

Creation of Digital Elevation Model of South East Queensland;

Create and validate data for all of South East Queensland;

High Quality Mapping in various formats; and

Interactive Web and CD delivery of data.

