



“Where will our knowledge take you?”

Olympic Dam Expansion EIS, Upper Spencer Gulf

Significant expansion of the Olympic Dam is proposed, which is the world's 4th largest known remaining copper and gold deposit and the largest known uranium deposit. BMT WBM participated in a number of infrastructure components as part of studies preparing for this expansion:

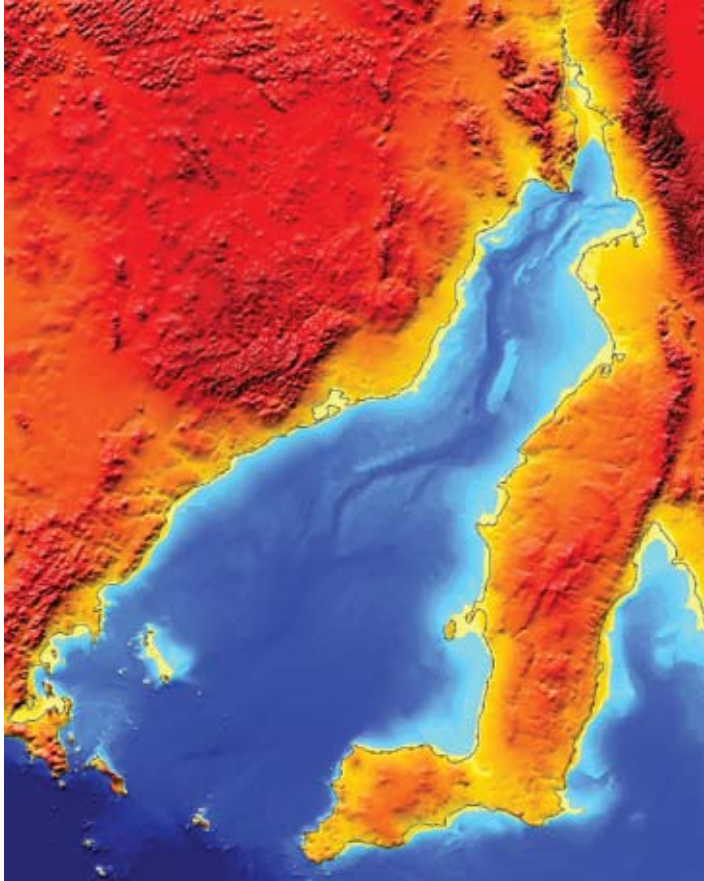
- Assessment of coastal processes and potential impacts from proposed infrastructure;
- Investigation into impacts associated with a proposed desalination plant; and
- Extensive field monitoring, sampling and analyses.



Some BMT WBM Spencer Gulf Projects:

Spencer Gulf Desalination Plant Discharge Modelling (2006)

- Fully three dimensional hydrodynamic modelling of a large scale water body;
- Detailed assessment of brine discharge behaviour; and
- Detailed near field assessments of diffuser design.



Spencer Gulf Metocean Data Collection Studies (2007-2008)

- Bottom mounted ADCP deployment for 2 separate 2 month periods;
- Met station deployment;
- Tide water level and salinity measurements; and
- Boat mounted ADCP transects



Upper Spencer Gulf Coastal Process Study (2007-2008)

- Detailed coastal process assessments at both regional and local scales
- Fully three dimensional hydrodynamic modelling of a large scale water body; and
- Wave climate derivation using SWAN.

