

# Coomera Pimpama Water Cycle Management Study

BMT WBM undertook a detailed assessment of the potential implications of various land use/water cycle development configurations within the Coomera-Pimpama Masterplan area on stormwater and water supply/wastewater infrastructure and life cycle cost, lot yield and stormwater quantity/quality elements for the area.

This work provided a basis for moving forward with Strategic Water Cycle Planning for the entire Masterplan area.

The report presented an assessment of the stormwater and water cycle management elements of water sensitive urban design (WSUD), including the use and benefits associated with rainwater tanks.

This provided the Water Futures Masterplanning process with locally specific and technically rigorous information relating to the likely benefits and costs associated with incorporating water sensitive urban design features across the Masterplan region. The study gave due consideration to the environmental, social and economic aspects of the proposed WSUD features.

In particular, this report investigated the impacts of three potential development cases, as follows:

- Traditional, or 'business as usual';
- WSUD; and
- Application of a 'regional' water quantity/quality approach.

## Client

Gold Coast City Council

## Date

2003 – 2004

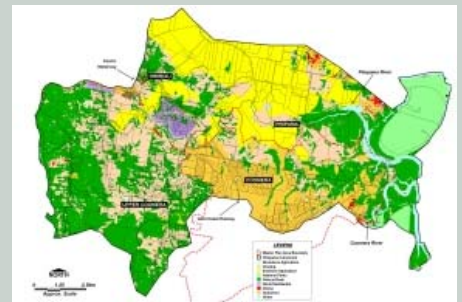
## Services & Expertise Provided

Stormwater, Wastewater and Water Supply system modelling;

WSUD development layout assistance;

Project conceptual design and costing; and

Extensive Local Government officer consultant and liaison.



*'Proposed' Land Use – Coomera-Pimpama Catchment*