

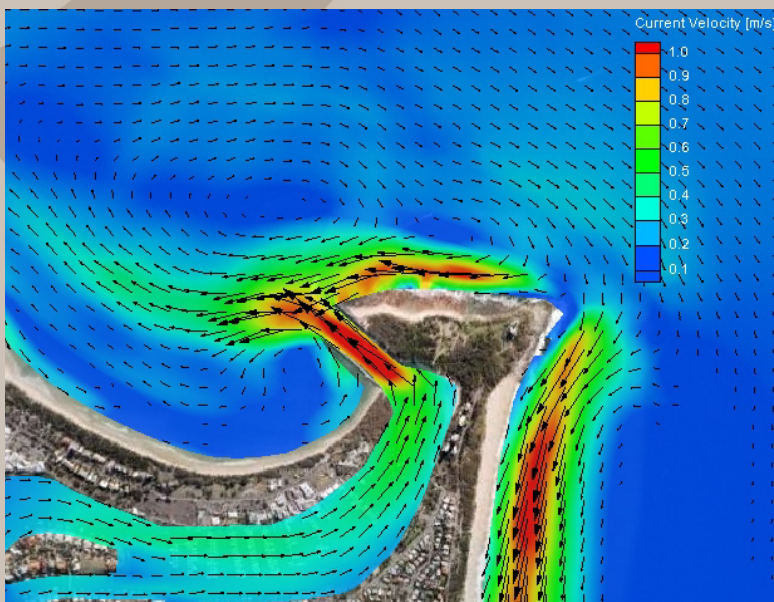
# Sunshine Coast Coastal Processes Study and Shoreline Erosion Management Plan

Sunshine Coast Regional Council commissioned BMT WBM to undertake a Coastal Processes Study and Shoreline Erosion Management Plan (SEMP) for the coastline between Caloundra and Noosa Heads.

The processes study, preceding the SEMPs, focused on the assessment of the offshore wave climate and subsequent sediment transport patterns and erosion hazard. These assessments were completed using a combination of spectral wave, hydrodynamic, longshore and cross shore sediment transport modelling within the entire study area.

The results of the processes study is currently being used to inform management decisions outlined in numerous Shoreline Erosion Management Plans (SEMPs) for defined beach units between Caloundra and Noosa Heads.

These SEMPs outline management measures focusing on the management of existing and future shoreline erosion risk along the Sunshine Coast. This includes the revision of coastal erosion prone area widths, for the 50 and 100 year planning horizons, including provision for sea level rise due to climate change.

**Client**

Sunshine Coast Regional Council

**Date**

2010 – ongoing

**Services & Expertise Provided**

Review of historical beach behaviour;

Detailed assessment of coastal processes using spectral wave, hydrodynamic, longshore and cross shore sediment transport modelling;

Identification and quantification of coastal hazards;

Formulation of shoreline erosion management plans; and

Revision of coastal erosion prone area widths.

